

# SPECIFICATION

**Dehler**  **30od**



## TECHNICAL DATA

**LOA** 10.30 m / 33' 10"

**HULL LENGTH** 9.14 m / 30' 0"

**LWL** 8.97 m / 29' 5"

**BEAM** 3.28 m / 10' 9"

**AIRDRAFT** 14.30 m / 46' 11"

**DRAUGHT**  
T - KEEL 2.20 m / 7' 3"

**BALLAST**  
T - KEEL 0.94 t / 2,072 lbs  
WATERBALLAST 0.2 t / 441 lbs

**DISPLACEMENT**  
T - KEEL 2.8 t / 6,173 lbs

**ENGINE APPROX.** Diesel 10 PS / hp

**FRESH WATER TANK** approx. 40 l / 10.57 gal

**FUEL TANK** approx. 25 l / 6.60 gal

**MAIN SAIL** 33.50 m<sup>2</sup> / 361 sq ft

**JIB 105%** 28.20 m<sup>2</sup> / 304 sq ft

**STAYSAIL** 15.00 m<sup>2</sup> / 161 sq ft

**CODE - 0\*** 52.00 m<sup>2</sup> / 560 sq ft

**GENNAKER A2\*** 100.00 m<sup>2</sup> / 1,076 sq ft

**GENNAKER A5\*** 85.00 m<sup>2</sup> / 915 sq ft

**RIG**  
IG 12.20 m / 40'  
J 4.11 m / 13' 5"  
P 12.00 m / 39' 4"  
E 3.90 m / 12' 8"

**CE CERTIFICATE** A - 4

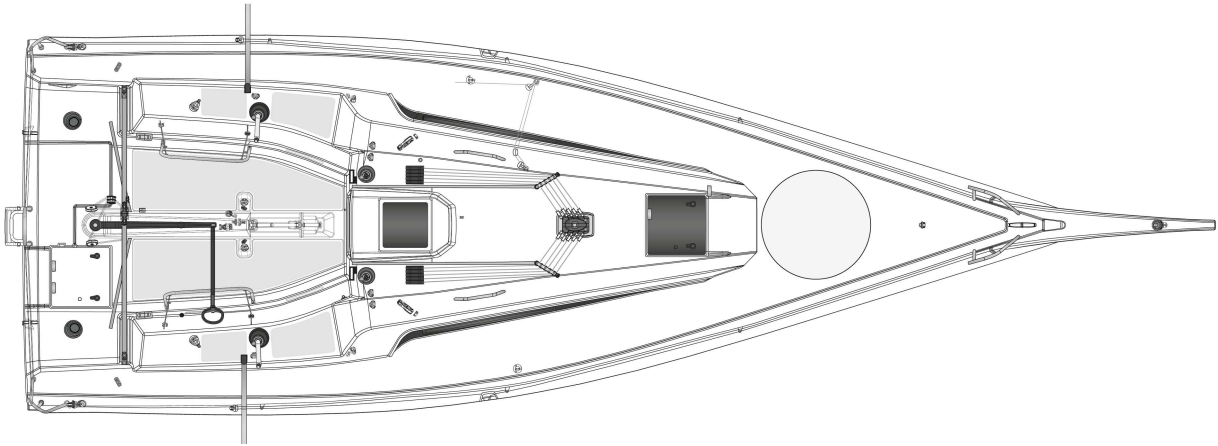
**DESIGN** judel/vrolijk & co.

**INTERIOR** judel/vrolijk & co. - Dehler

**DEHLER STEALTH DRIVE** Bieker Boats

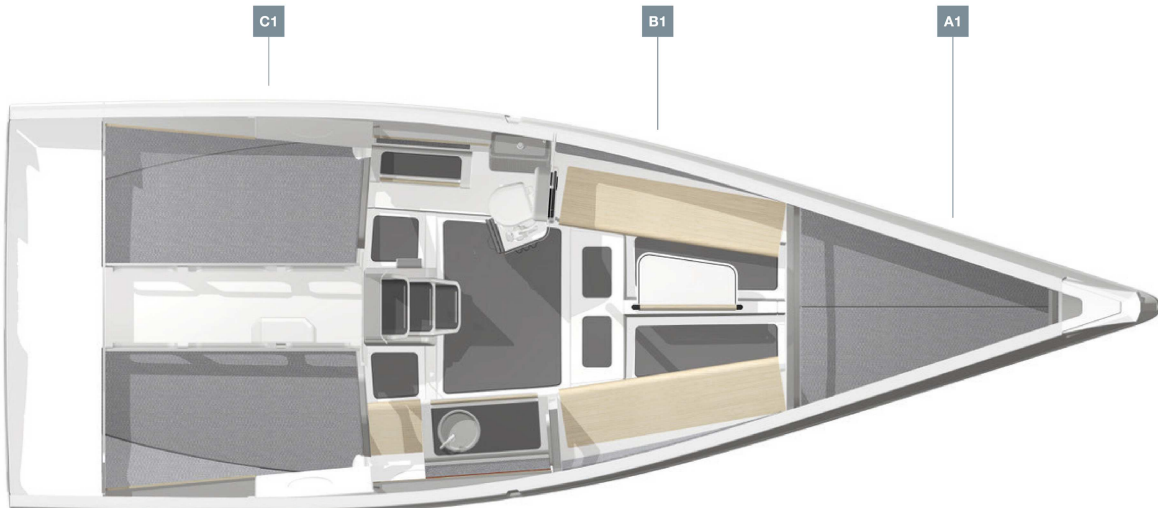
All measurements/figures are approximate. Errors and omissions excepted. Specification and material can be changed without notice. Valid from 2022.03.29.

## DECK LAYOUT



## INTERIOR LAYOUT

STANDARD



## HULL

- GRP hull, built in vacuum infusion with PVC sandwich core and high-performance isophthalic gelcoat, colour: Light Grey, 1st layer vinyl ester resin
- High-rigid GRP bottom structure with "Dehler carbon cage"
- Waterline gelcoat, colour: Dehler Red

## KEEL

- T-keel, GRP fin with lead bulb, draft: 2.20 m
- GRP twin-rudder with self-aligning bearings

## LAYOUT & INTERIOR

- A1: Stowage room with 2 foldable hatches, "bow crashbox", bulkhead
- B1: Saloon with stowage in seats, could moulded light plywood bench, foldable, mast support aluminium
- C1: Pantry block on stb with washing basin, tap, 1 flame gas stove and integrated cuttingboard. Wet space with manual toilet and stowage on ps. Aft berth with stowage, both sides.
- D30 one design companionway with functional stairs and engine box
- Saloon table, folding with aluminium handrail

## WOOD (FURNITURE, FLOORBOARD)

- Folding door, saloon table and benches in wood (Oak) and handrails in carbon

## UPHOLSTERY

- Mattresses for aft berths (th. 80mm)
- Upholstery cabin - Sunbrella, colour: Grey

## DECK & OUTSIDE EQUIPMENT

- GRP deck, built in vacuum infusion with PVC sandwich core and high-performance isophthalic gelcoat, colour: Light Grey, 1st layer vinyl ester resin
- Flexiteek on cockpit floor and cockpit benches
- Tiller steering system on deck with adjustable connecting rod and Spinlock tiller extension - Stern locker on stb, central GRP footrest at cockpit bottom, adjustable stainless steel footrest for helmsman
- Pulpit and pushpit
- Railing, stainless steel stanchion with stainless steel wire
- Halyards and control lines with organizers and jammers on coach roof, retractable mooring cleat
- 2 LEWMAR 40 ST EVO Race Plus manual halyard winches
- 2 LEWMAR 40 ST EVO Race Plus manual secondary winches
- Life raft storage in aft cockpit ps with cover
- Composite bowsprit with bobstay and padeye for tacklines, high-performance isophthalic gelcoat, colour: Light Grey, 1st layer vinyl ester resin
- "3D" genoa barberhauler for jib, adjustable from cockpit
- Mainsheet with purchase system 1:6 / 1:24 transmitted on GRP base with swivel arm at cockpit bottom.

Mainsheet traveller at side deck level in aft cockpit

- 1 Lewmar sz. 44 deck hatch on coach roof fwd of mast - flush, 1 Lewmar Mitre Sz. 0 portlight each side in cockpit
- 2 Coach roof windows, Dodger sliding hatch with window, halyard bags stb/ps

## RIG & SAILS

- Rig, carbon, 1 set of spreaders, deck stepped incl. rod rigging, aluminium boom, 1 main halyard, 1 jib halyard „9/10“, 2 reefs, 2 manual dyneema backstay in cockpit, manual vang, outhaul, cunningham

## NAVIGATION & INSTRUMENTS

- Illuminated compass at companionway
- LED navigation lights

## PROPULSION

- Engine (Diesel, approx. 9.9 hp), Dehler 30 one design 'Stealth Drive' retracting concept, operated from cockpit, 3 blade fixed propeller, 12 V - 70 A Alternator - Fuel tank, transparent, approx. 25 l

## EQUIPMENT

- 12 V electric system with main panel, 12 V USB socket
- Battery set - capacity: Starter and service battery: Li-Io 1 x 90 Ah
- LPG gas system, stowage for 1 bottle
- Waterballast, appr. 200 l each side with electric pump and valves, overboard discharge
- Manual and electrical bilge pump with control panel
- Black water system (appr. 35 l) with deck extraction and seacock for head
- Fresh water system with manual pump
- Fresh water tank, flexible, appr. 40 l

## SHIPPING & TRANSPORT

- CE - Certificate cat. A - 4 / B - 6
- Owners manual
- EC - Type Examination Certificate
- One Design Measurement